



## COMPOSER®

COMPOSER® is Watlow's new, easy-to-use software for configuring and customizing controllers. Use it to optimize Watlow's F4T®, D4T™ and EZ-ZONE® PM and RM controllers for specific applications. Task-specific views simplify all aspects of commissioning new controllers including managing the inputs and outputs from pluggable flex modules, setting up functions such as control loops and alarms and creating and editing profiles. COMPOSER software is included on the "Watlow Support Tools" DVD and available for download at [www.watlow.com](http://www.watlow.com).

### Features and Benefits

#### Function block diagram with live data and error indication

- Enables application-specific configuration of controllers
- Depicts the configuration visually making it easy to understand and explain to others
- Speeds up application testing and troubleshooting

#### Multi-language support

- Prevents errors by communicating with users in their own languages

#### System image files contain complete configuration

- Makes it fast and easy to duplicate settings from one system to another
- Simplifies sending configurations to remote sites
- Provides backup of settings to restore if settings are changed or controller is replaced

#### Dashboard view

- Makes it easy to connect to controllers
- Clearly indicates when there are configuration errors that need to be addressed
- Allows downloading configuration files without allowing access to setup and configuration views

#### Opens and displays saved configuration image files

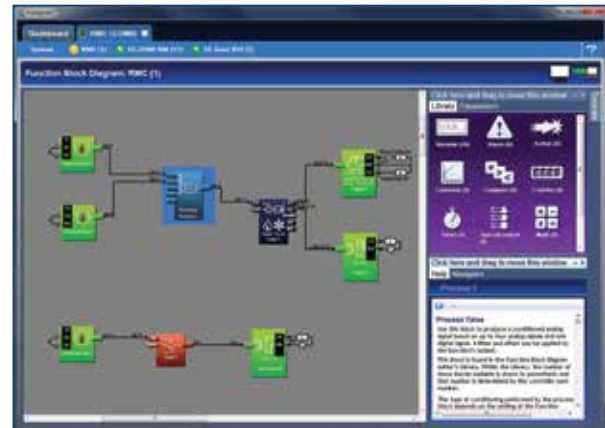
- Simplifies supporting remote users
- Makes it easy to inspect configuration files

#### Configurable interface

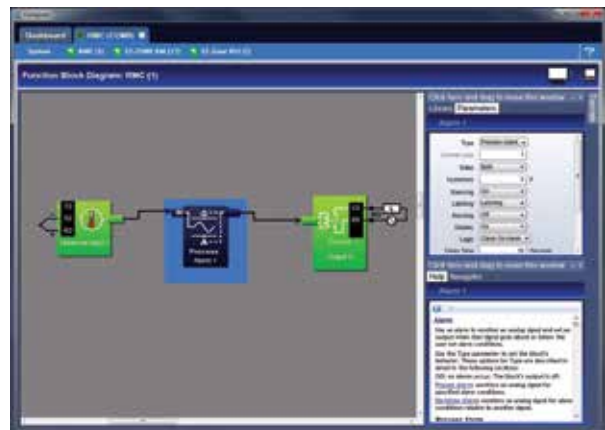
- Lets users adjust window sizes and positions to work efficiently

#### Integrated video tutorials and help

- Speed up commissioning by demonstrating configuration steps
- Simplifies access to function block and parameter descriptions
- Reduces configuration errors
- Helps the user take full advantage of available features



### Illustrations from COMPOSER



Function block diagram makes it easy to visualize application solutions.



Dashboard makes it easy to connect, indicates configuration errors and allows downloading configuration files without allowing access to setup.

Your Authorized Supplier is:



Batavia, IL - Rockford, IL - Waukesha, WI - Appleton, WI

Phone: 800-323-5712 | Fax: 630-406-0595

[www.ashequipment.com](http://www.ashequipment.com) | [sales@ashequipment.com](mailto:sales@ashequipment.com)



## COMPOSER

### Technical Data

#### Additional Features and Benefits for F4T

##### Profile editor

- Speeds up profile creation and editing
- Allows maintenance of profile list in controllers from a remote PC
- Makes it easy to move profiles from one controller to another
- Exports profiles to PC files for backup and portability

##### Fast, reliable Ethernet support

- Easily connects to 1 or more controllers
- Minimizes time to read and write configuration settings

##### Pluggable flex module management

- Simplifies configuration by clearly indicating which hardware is present
- Shortens commissioning by allowing user to configure controller for flex modules prior to installing them

##### Security configuration

- Allows OEMs and supervisors to limit permissions to specific features
- Controls access via COMPOSER and controller
- Prevents errors and reduces downtime by preventing undesired configuration changes

##### Calibration view with on-screen instructions and automation

- Reduces downtime by simplifying the calibration verification procedure

#### Features by Supported Product

Feature	EZ-ZONE					
	F4T	D4T	RM	RUI	PM	ST
Connect via Ethernet	✓	✓				
Connect via 485			✓	✓	✓	✓
Function block diagram view	✓	✓	✓		✓	
System overview	✓	✓	✓	✓	✓	✓
Device details	✓	✓	✓	✓	✓	✓
Save and import system images	✓	✓	✓	✓	✓	✓
Network setup	✓	✓	✓	✓	✓	
View image files offline*	✓	✓	✓	✓	✓	
Personalization view	✓	✓	✓	✓	✓	
Password security setup	✓	✓	✓		✓	✓
Ramp and soak profile editing	✓					
Calibration unity	✓	✓				
Pluggable modules view	✓	✓				

\*Offline viewing of saved system images except profiles.

#### Specifications

##### Supported Products

Product	Minimum Version
PM PLUS™	1.0
RMA PLUS™	1.0
F4T	2.0
D4T	3
EZ-ZONE PM	15
EZ-ZONE RM: RMC, RME, RMS, RMH, RML	9
EZ-ZONE RM: RMA	5
EZ-ZONE RUI	6

##### Compatible Operating Systems

- Windows® 10
- Windows® 8.1

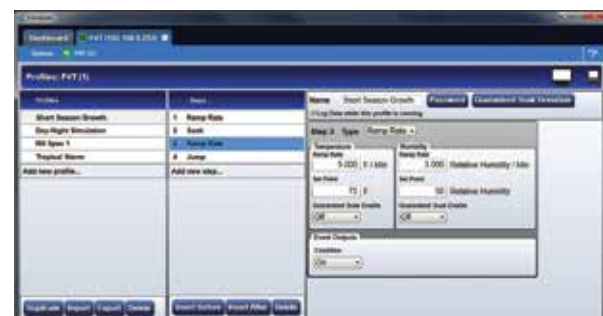
##### Minimum System Requirements

- Microprocessor: 1 gigahertz (GHz) or faster 32-bit or 64-bit
- Memory: 1 gigabyte (GB) RAM (32-bit) or 2 GB RAM (64-bit)
- Disk space: 250 megabytes (MB)
- Video: 1280 x 720 or higher
- Port for controller communications: Ethernet for F4T or EIA-485 half duplex (2-wire) for EZ-ZONE RM and PM

#### Illustrations from COMPOSER for F4T



Pluggable modules view simplifies configuration by showing hardware present.





## EZ-LINK™ Mobile App

Watlow's EZ-LINK™ mobile app allows users to easily set up and monitor Watlow PM PLUS™ and EZ-ZONE PM controllers via Bluetooth® wireless technology. The app is available free-of-charge from the app stores for phones and tablets, and provides access to the controller's parameters with fully spelled out names in plain text with help topics that explain each parameter and option.

When connected to a controller, the app's dashboard view displays up to 20 parameters. Users can configure which parameters appear on the dashboard view with the controller's custom home page. The all parameters feature in the app allows users set up the controller's inputs, control settings, alarms, outputs and other features and functions.

In addition to controller setup, monitoring and adjusting, the EZ-LINK mobile app provides many benefits to the user including password protection, alarm and error indicators, connection to Watlow for feedback and support and accessing device information such as firmware version, part number and serial number.

The app works with all PM PLUS and 1/16 DIN EZ-ZONE PM controllers and limits with Bluetooth® wireless technology. This option is approved for use in the U.S., Australia, Canada, Colombia, the European Union, Japan and New Zealand with more locations coming soon.



### Features and Benefits

#### Wireless communication

- Connect to controllers up to 70 feet (21.3 meters away)
- Eliminates need to access the back of the controller, USB-to-485 converter and error-prone wiring

#### Save and import system image files via Bluetooth®

- Makes a complete record of controller settings in a file
- Accurately copies or restores saved settings from a file to a controller

#### Portable system image files

- Send and receive files via email, messaging and other sharing methods
- View the controller configuration by opening the file on a PC with Watlow's COMPOSER software
- Create a file with COMPOSER and email it to a phone to support updating controllers in the field with the app

#### All parameters feature

- Allows user to interactively set up the controller's inputs, control settings, alarms, outputs and other functions

#### Uses controller's custom home page and password security settings

- Adapts to the application by presenting the same parameters as found on the controller's custom home page
- Allows full access, read-only access or no access to home page and all parameters feature based controller's password protection settings

#### Visual device ping and controller naming

- Identifies which controller is connected when several controllers are within range
- Allows user to name the controller and easily find it again the next time

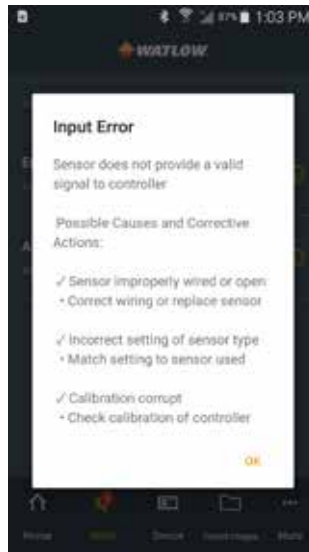


## EZ-LINK Mobile App

### Illustrated Features



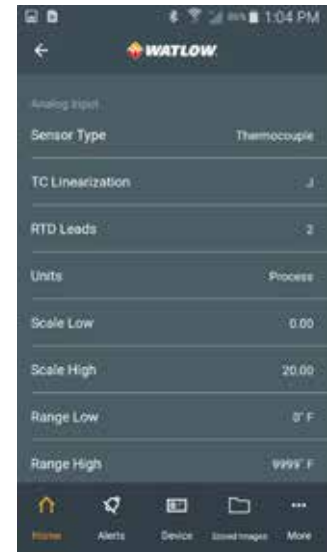
Provides access to controller's home page parameters



Decodes alarms, errors and messages



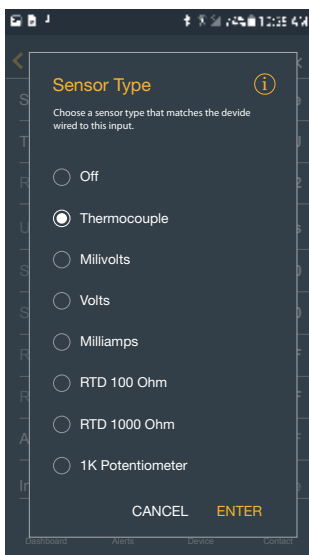
Save and import system image files via Bluetooth®



Makes setting up controllers easy with readable text...



...intuitive operation



...and help for each parameter

### Compatibility

The EZ-LINK mobile application is compatible with all PM PLUS and 1/16 DIN EZ-ZONE PM controllers and limits that have the Bluetooth® communications option.

### System Requirements




#### Android™

- Compatible versions: 6, 7, 8 and 9

#### Apple®

- Compatible versions: 10, 11 and 12

#### Supported devices

- Designed for phones, compatible with tablets. Download the EZ-LINK App  at  for Android™ or  for iPhone®.

Your Authorized Supplier is:



Batavia, IL - Rockford, IL - Waukesha, WI - Appleton, WI

Phone: 800-323-5712 | Fax: 630-406-0595

www.ashequipment.com | sales@ashequipment.com



## ASPYRE® Configurator

ASPYRE® Configurator is Watlow's easy-to-use software for configuring and customizing ASPYRE power controllers. Use it to optimize Watlow's ASPYRE products for specific applications. Task-specific views simplify all aspects of commissioning new controllers including configuring the use of digital and analog inputs, setting options such as maximum voltage and maximum current, setting up features including feedback, firing mode and communication options and uploading, saving and downloading recipe files that include the complete configuration of a power controller.

ASPYRE Configurator software is included on the "Watlow Support Tools" DVD and available for download at [www.watlow.com](http://www.watlow.com).



### System Requirements

- **Microprocessor:** 1 gigahertz (GHz) or faster, 32-bit or 64-bit
- **Memory:** 1 gigabyte (GB) RAM (32-bit) or 2 GB RAM (64-bit)
- **Disk Space:** 250 megabytes (MB)
- **Video:** 1400 x 1050 or higher
- **Operating System:** Microsoft® Windows® 10, 8.1 or 7
- **Port for controller communications:** USB 1.0 or EIA-485 half duplex (2-wire)

*Your Authorized Supplier is:*



Batavia, IL - Rockford, IL - Waukesha, WI - Appleton, WI

Phone: 800-323-5712 | Fax: 630-406-0595

[www.ashequipment.com](http://www.ashequipment.com) | [sales@ashequipment.com](mailto:sales@ashequipment.com)



## EZ-ZONE® Configurator

EZ-ZONE® Configurator software allows Wattlow® EZ-ZONE products to be configured in one simple process. Its interface is flexible and easier to read than the basic remote user interface (RUI). It operates without requiring purchase of communications options as it uses the standard bus communications protocol that is included with all EZ-ZONE products.

The EZ-ZONE Configurator software is available as a free download at [www.wattlow.com](http://www.wattlow.com).

### Features and Benefits

#### Communicates with EZ-ZONE products via standard bus protocol

- Works regardless of which communications option is purchased or even when no communication option is purchased

#### Detects EZ-ZONE devices and reads up configuration

- Allows easy access to any setting

#### Presents pages and menus as they are in the controller's display, RUI and manuals

- Enables the user to easily locate what they are looking for

#### Wizard-style editor with menu explorer

- Allows for easy examination of each menu
- Enables the user to skip directly to the parameters they want to work with

#### On-screen parameter help

- Reduces configuration errors
- Helps the user take full advantage of available features

#### Copies parameter settings

- Decreases configuration time especially for multi-loop controllers

#### Saves configuration files on the computer with all the information required to set up a controller

- Preserves settings to archive and recover or simplify setting up of another EZ-ZONE product
- Enables set up files to be emailed or made available to users on a network or via the internet to aid them with set up



#### View or modify configuration files saved during online editing sessions

- Allows users to get a jump on setting up EZ-ZONE products
- Aids in supporting remote users

#### Downloads saved configuration files

- Simplifies configuration of EZ-ZONE products

#### Flexible and smart compatibility checking

- Ensures configuration files are only loaded into devices that are similar enough to the original that the settings make sense

*Your Authorized Supplier is:*



Batavia, IL - Rockford, IL - Waukesha, WI - Appleton, WI

Phone: 800-323-5712 | Fax: 630-406-0595

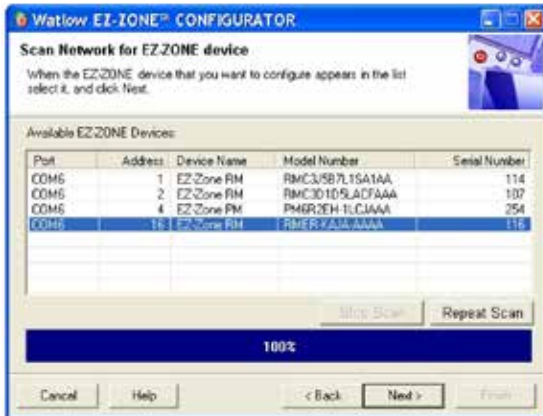
[www.ashequipment.com](http://www.ashequipment.com) | [sales@ashequipment.com](mailto:sales@ashequipment.com)



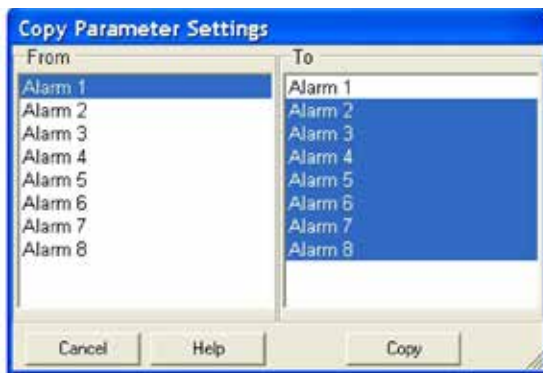
## EZ-ZONE Configurator

### Technical Data

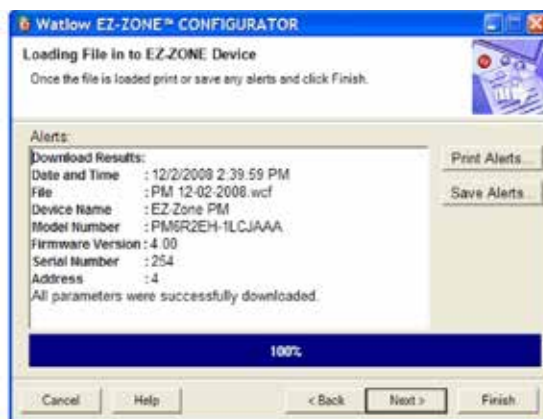
### Illustrated Features



Detects EZ-ZONE devices connected to the computer's communications ports.



Copy feature speeds up configuration.



Confirms that parameter downloads were successful and reports exceptions.



Menu explorer allows users to skip directly to desired parameter or browse each setting.

### Compatibility

EZ-ZONE Configurator is compatible with all versions of EZ-ZONE products, but can be used to download configuration files only to products meeting the requirements listed below.

Product	Minimum Firmware Version
EZ-ZONE RUI	3.0
EZ-ZONE ST	4.0*
EZ-ZONE PM	7.0
EZ-ZONE PM Express	1.0
EZ-ZONE RM Control Module	1.0
EZ-ZONE RM Expansion Module	1.0
EZ-ZONE RM Access Module	1.0
EZ-ZONE RM High-Density Control Module	5.0
EZ-ZONE RM High-Density Limit Module	5.0
EZ-ZONE RM High-Density Scanner Module	5.0

\*Configuration files may be downloaded to EZ-ZONE ST controllers originally purchased with revision 4.0 or later only.

### System Requirements

#### Minimum Requirements

- 485 communications port: USB port and USB-to-485 converter, or serial COM port (232) and 232-to-485 converter
- Microprocessor: Pentium® IV or equivalent
- Memory: 128 MB RAM (256 MB recommended)
- Disk space: 140 MB (100 MB if Microsoft.NET Framework is already installed.)
- Video: 800 x 600 (1024 x 768 or higher recommended)

#### Operating System Requirements

- Windows® 10
- Windows® 8.1
- Windows® 7



## EZ-ZONE® LabVIEW™ Driver

An instrument driver for National Instruments LabVIEW™ software is available for communicating with Watlow's EZ-ZONE® products via the Standard Bus communications protocol that is included with all EZ-ZONE products.

A LabVIEW™ instrument driver is a software package created with LabVIEW™ that simplifies development of applications such as test software. These instrument drivers include software functions called LabVIEW™ Virtual Instruments (VIs) that are used with LabVIEW™ to communicate with an instrument such as Watlow® EZ-ZONE PM.

The EZ-ZONE LabVIEW™ instrument driver software is available as a free download from [www.watlow.com](http://www.watlow.com).

### Features and Benefits

#### Supports access to all EZ-ZONE parameters

- Integrates fully with automated applications

#### Compatible with any EZ-ZONE standard bus communication protocol

- Communicates with any EZ-ZONE product without requiring purchase of a communications option

#### Four VIs: Initialize, Read, Write and Close—standard features of most LabVIEW™ instrument drivers

- Provides familiarity for LabVIEW™ users

#### Working example of a VI (application) that uses the EZ-ZONE instrument driver and includes detailed instructions

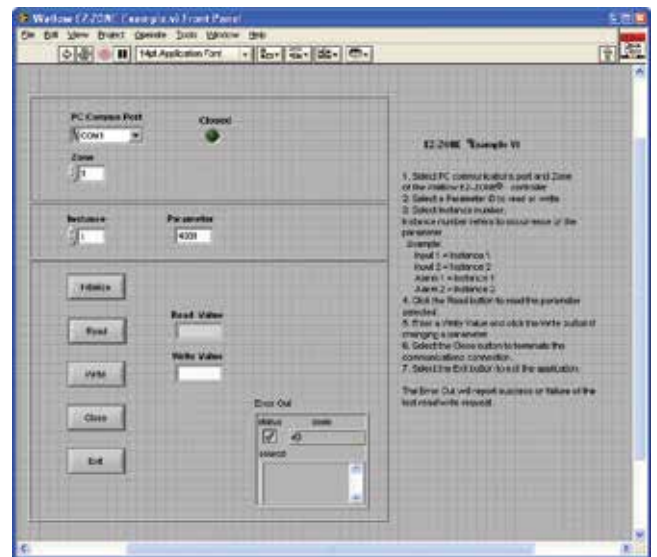
- Simplifies integration

### Compatibility

The Watlow EZ-ZONE instrument driver is supported by LabVIEW™ versions 8.6 and later.

### Documentation

Documentation for using the driver is integral to the driver and installs with it. In order to access each specific EZ-ZONE parameter, each parameter has been assigned a parameter number. The parameter numbers appear in the EZ-ZONE product manuals.



### Product Support

For help with the EZ-ZONE driver contact Watlow technical support. LabVIEW™ is supported by National Instruments™ and its dealers.

### How to Get the EZ-ZONE Driver

Contact Watlow's technical support for controllers at:  
Phone: (507) 494-5656  
Email: [wintechsupport@watlow.com](mailto:wintechsupport@watlow.com)

### Other Drivers

Drivers are also available on the National Instruments™ web site for these Watlow products:

- SERIES 96
- SERIES F4 (single and dual channel ramping controllers)
- SERIES PD (single and dual channel controllers)





## EZ-ZONE® GSD Editor

The EZ-ZONE® GSD Editor software allows users to create custom general station description (GSD) files for configuring communications between EZ-ZONE products and other automation equipment supporting the PROFIBUS DP communications protocol.

The EZ-ZONE GSD software is available for download free of charge at [www.watlow.com](http://www.watlow.com) and on the Controller Support Tools DVD-ROM (part number 0601-0001-0000) included with the related Watlow controllers.

### Features and Benefits

#### Creates and edits GSD files

- Enables configuration of DP-V0 (cyclic) communication between EZ-ZONE devices and a PROFIBUS DP master such as a programmable logic controller (PLC)

#### Allows users to select just the values they need

- Optimizes PLC memory use by allowing cyclical messages to be configured with desired data only
- Speeds up network by eliminating the transmission of unnecessary data as with fixed, vendor-supplied GSD files

#### Supports EZ-ZONE PM, RM Access Modules and RUI Gateways

- Makes it easy for PROFIBUS DP users to use EZ-ZONE products in their applications

#### Presents all the parameters found in supported EZ-ZONE device's menus

- Maximizes flexibility in the design of applications

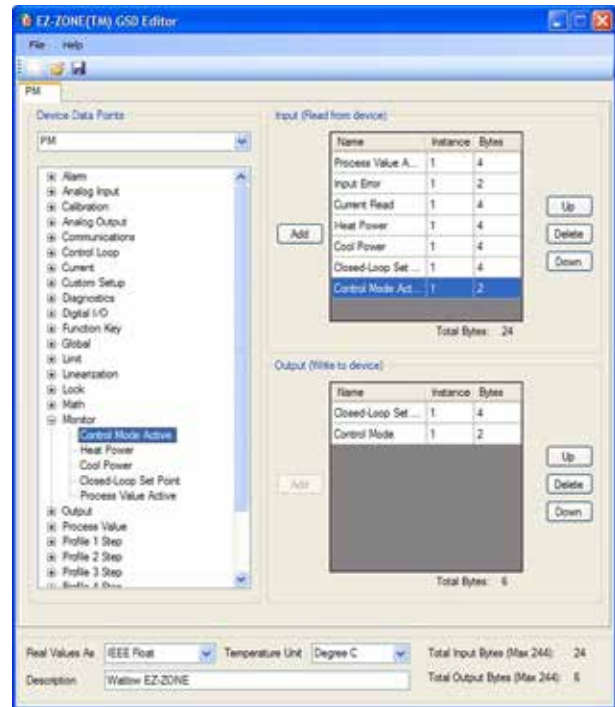
### System Requirements

#### System Requirements:

- Microprocessor: Pentium® IV or equivalent
- Memory: 128 MB RAM (256 MB recommended)
- Disk space: 140 MB (100 MB if Microsoft.NET Framework is already installed.)
- Video: 1024 x 768 or higher
- Microsoft® compatible pointing device (mouse or trackball)

#### Operating System Recommended:

- Windows® 8
- Windows® 7



### Compatibility

EZ-ZONE GSD Editor software can be used to create and edit GSD files for EZ-ZONE PM controllers with the PROFIBUS DP field communications option and EZ-ZONE ST and PM controllers and RM control systems when connected to an EZ-ZONE RM access module or EZ-ZONE RUI gateway with the PROFIBUS DP option.



## EHG<sup>®</sup> SL10 Software

The EHG<sup>®</sup> SL10 software allows the user to configure, monitor, log and chart data from Watlow's EHG SL10 integrated multi-function controllers. It provides an easy-to-use and centralized interface for multiple EHG SL10 controllers.

This software gives the user the ability to change set points, label devices and much more all with the click of a key.

The EHG SL10 software is available for download free of charge at [www.watlow.com](http://www.watlow.com) and on the Controller Support Tools DVD-ROM (part number 0601-0001-0000) included with the related Watlow controllers.

### Features and Benefits

#### Automatic network detection and configuration

- Simplifies configuring multi-device networks by setting unique addresses in each device as they are added to the network
- Scans for new controllers added to the network

#### Manual network configuration

- Connects to and monitors existing controller networks

#### User definable device names

- Speeds up troubleshooting by allowing users to set names for networked controllers that correlate them with heater locations

#### Monitor mode

- Displays temperature, color coded alarms and warnings for all networked controllers
- Centralizes monitor function and eliminates time spent checking alarm states at the heater

#### Network state indicator

- Simplifies and reduces errors when controlling many points
- Shows at a glance if any controller has a warning or alarm condition

#### Charting

- Improves system operation by allowing engineers and operators to see zone temperature trends in real time

#### Data logging

- Saves time and effort by eliminating the need to manually record temperatures
- Simplifies troubleshooting by providing a record of zone temperatures

#### Configure mode

- Simplifies and speeds up changing set points and other control parameters



#### Password protected setup

- Prevents unauthorized changes to alarm set points, tuning and control settings

#### Recipe manager

- Speeds up commissioning new devices by allowing saved recipes to be downloaded to multiple controllers
- Reduces data entry errors by saving known good settings

#### Ping function blinks indicator on selected controller

- Reduces errors by allowing technicians to confirm device identities

### Compatibility

EHG SL10 software can be used to configure EHG SL10 controllers when run on a computer connected to the controllers via an EIA-485 (also known as RS-485) network. For most computers a 485 converter is required.

### System Requirements

#### Operating System

- Windows<sup>®</sup> XP Professional



## SpecView SCADA Software

SpecView is easy-to-use Supervisory Control and Data Acquisition (SCADA) software for Watlow® controllers, including the F4T® process controller and EZ-ZONE® controllers as well as third-party products. Watlow's single point of support for hardware, software and application needs ensures knowledgeable and prompt responses to questions or concerns.

This competitively priced package includes field-proven features, many suggested by loyal users. Built-in support and auto-detect for Watlow controllers make setup quick and simple. SpecView is ideal for industrial applications with support for barcode readers and touch-screen operation.

To try before purchasing, download SpecView from the Watlow website and run in the time-limited demo mode.

### Features and Benefits

#### Built-in support and auto-detect for controllers

- Saves set-up time
- Eliminates the need to learn communications protocols
- Integrates devices from multiple vendors

#### Watlow EZ-ZONE standard bus communications protocol

- Communicates with any EZ-ZONE product without requiring purchase of a communications option

#### Highly configurable trending/graphing

- Simplifies monitoring and troubleshooting processes and machines
- Provides a permanent, unalterable record of results

#### Flexible data logging and report generator

- Helps users comply with regulatory requirements including AMS 2750D NADCAP
- Reduces labor and increases accuracy by automating data collection
- Simplifies record keeping by consolidating measurements, operator comments and other information into Excel® - compatible report formats
- Allows data to be grouped in user-defined batches
- Records operator actions

#### Easy-to-build, customizable screens

- Allows creation of application-specific screens, which can automate tasks, decrease training time and simplify monitoring and operation
- Highlights specific parameter values with user-set color dynamics and provides bar graphs for "at-a-glance" monitoring
- Limits access with passwords if desired



#### Easy-to-use recipe manager

- Saves snapshot of current parameter settings
- Eliminates operator error when setting machine parameters
- Reviews and edits complex programmer profiles

#### Historical replay option

- Helps troubleshoot processes by allowing review of recorded data

#### Remote access option

- Allows multiple, identical operator stations for convenient access
- Reduces downtime and increases utilization with monitoring and access over LAN, modem or Internet

### System Requirements

#### Compatible Operating Systems:

- Windows® 10, 8.1, 8, 7, Vista, Server 2003 and XP

#### Minimum System:

- Pentium® processor or equivalent AMD
- 1GB RAM (2GB or more recommended)
- 100MB hard disk space to install SpecView
- Additional disk space for data logging
- Instrument connection: Serial port or Ethernet
- USB port for the key

#### Ideal System:

- Intel® Core™ i5 2.6Ghz processor or AMD equivalent
- 2GB RAM
- 500GB hard disk plus enough space for data logging



## SpecView SCADA Software

### Supported Controllers and Protocols

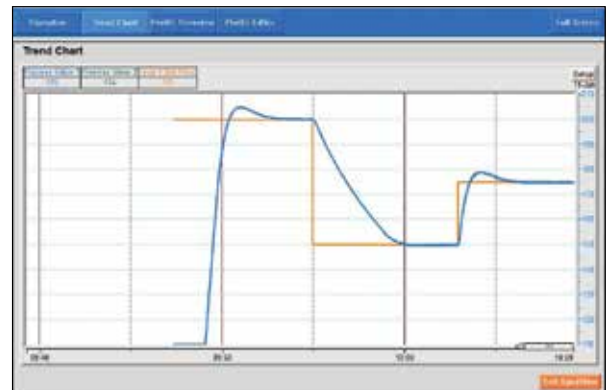
Controller	Controller's Communication Protocol		
	Standard Bus	Modbus® RTU	Modbus® TCP
D4T™ Data Logger	N/A	✓	✓
F4T	N/A	✓	✓
ASPYPE® Power Controller	N/A	✓	N/A
EZ-ZONE RM, PM and ST	✓	✓ <sup>①</sup>	✓ <sup>①</sup>
SERIES F4 Ramping	N/A	✓	N/A
SERIES 96, 97, SD	N/A	✓	N/A
POWER SERIES™	N/A	✓	N/A
MICRODIN	N/A	✓	N/A
SERIES 986, 987, 988, 989	N/A	✓	N/A
CLS200 (standard or ramp/soak)	N/A	✓	N/A
MLS300 (standard or ramp/soak)	N/A	✓	N/A

① Modbus® support for basic operation parameters is included. Automatic detection of EZ-ZONE instruments is not available via Modbus® so configurations must be set up manually. EZ-ZONE ST controllers versions 1 to 3 are supported via Modbus® with a RUI Gateway only.

### Application Examples



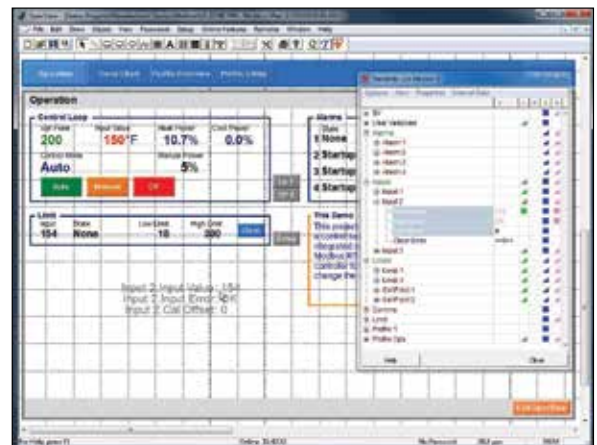
Track and report batch-specific processing data.



Graph and log process data. Replay data that may have been missed while a user was away. For playback of data older than four hours get the historical replay option.



Create application-specific screens that depict process data so users can relate.



Make screens with drag-and-drop ease.



## SpecView SCADA Software

### Ordering Information - Standard

#### Part Number

① ②	③	④	⑤	⑥	⑦	⑧ ⑨	⑩	⑪	⑫	⑬
	Version	Ports	Historical Replay & Strategy Cont.	DDE and OPC	ActiveX Container	Remote Users	Special Watlow Drivers	Third Party Drivers	Update Plan	
SV	S			-			-			0

③ Version	
S =	Standard

④ Ports	
S =	Single
M =	Multiple

⑤ Historical Replay and Strategy Controller	
0 =	None
H =	Historical replay
S =	Strategy controller
B =	Both historical replay and strategy controller

⑥ DDE and OPC	
0 =	None
D =	DDE
C =	OPC client
B =	Both DDE and OPC client

⑦ ActiveX Container	
0 =	None
A =	ActiveX container

⑧ ⑨ Remote Users	
00 =	None
XX =	Number of simultaneous remote users (01 to 99)

⑩ Special Watlow Drivers	
0 =	None
1 =	SERIES F4 programmer

⑪ Third Party Drivers	
0 =	None
1 =	Allen-Bradley® DF1

**Note:** Special drivers for other third-party products (Honeywell®, Eurotherm®, Mitsubishi®, Yokogawa® and Marathon) are available directly from SpecView.

⑫ Update Plan	
0 =	1 year of free updates
5 =	5 additional years of updates (6 years total)

### Ordering Information - Mini

#### Part Number

① ②	③	④	⑤	⑥	⑦	⑧ ⑨	⑩	⑪	⑫	⑬
	Version	Ports	Historical Replay & Strategy Cont.	DDE and OPC	ActiveX Container	Remote Users	Special Watlow Drivers	Third Party Drivers	Update Plan	
SV	M			-			-			0

③ Version	
M =	Mini (limited to two instrument views)
<b>Note:</b> The mini version is limited to 2 instrument views and may not be appropriate for use with some devices such as profiling and multi-loop controllers where a single device appears as multiple instruments in SpecView.	

④ Ports	
S =	Single
M =	Multiple

⑤ Historical Replay and Strategy Controller	
H =	Historical replay
B =	Both historical replay and strategy controller

⑥ DDE and OPC	
0 =	None
D =	DDE
C =	OPC client
B =	Both DDE and OPC client

⑦ ActiveX Container	
0 =	None
A =	ActiveX container

⑧ ⑨ Remote Users	
00 =	None
XX =	Number of simultaneous remote users (01 to 99)

⑩ Special Watlow Drivers	
0 =	None
1 =	SERIES F4 programmer

⑪ Third Party Drivers	
0 =	None
1 =	Allen-Bradley® DF1

**Note:** Special drivers for other third-party products (Honeywell®, Eurotherm®, Mitsubishi®, Yokogawa® and Marathon) are available directly from SpecView.

⑫ Update Plan	
0 =	1 year of free updates
5 =	5 additional years of updates (6 years total)



## SpecView SCADA Software

### Ordering Information - Upgrade

#### Part Number

① ②	③	④	⑤	⑥	⑦	⑧ ⑨	⑩	⑪	⑫	⑬
SV	Version	Ports	Historical Replay & Strategy Cont.	DDE and OPC	ActiveX Container	Remote Users	Special Watlow Drivers	Third Party Drivers	Extend or Restart Update Plan	0

③ Version	
U =	No version change; upgrade options only
N =	Upgrade mini to standard

④ Ports	
0 =	No upgrade
M =	Multiple

⑤ Historical Replay and Strategy Controller	
0 =	No upgrade
H =	Historical replay (already included with SpecView Mini)
S =	Strategy controller
B =	Both (do not order this option with SpecView Mini)

⑥ DDE and OPC	
0 =	No upgrade
D =	DDE
C =	OPC client
B =	Both DDE and OPC client

**Note:** Your upgrade order must be accompanied by the Step 1 code from the Upgrade screen in SpecView. Use the upgrade order form available at [www.watlow.com](http://www.watlow.com) or upon request from Watlow or your authorized distributor.

⑦ ActiveX Container	
0 =	No upgrade
A =	ActiveX container

⑧ ⑨ Remote Users	
00 =	No upgrade
XX =	Number of simultaneous remote users (01 to 99)

⑩ Special Watlow Drivers	
0 =	No upgrade
1 =	SERIES F4 programmer

⑪ Third Party Drivers	
0 =	No upgrade
1 =	Allen-Bradley® DF1
<b>Note:</b> Special drivers for other third-party products (Honeywell®, Eurotherm®, Mitsubishi®, Yokogawa® and Marathon) are available directly from SpecView.	

⑫ Extend or Restart Update Plan	
0 =	No additional updates
2 =	Extend update plan by 2 years. <b>Note:</b> Valid only <b>prior</b> to expiration of the update plan.
5 =	Extend update plan by 5 years. <b>Note:</b> Valid only <b>prior</b> to expiration of the update plan.
U =	Start a new 2-year update plan. <b>Note:</b> Select this option to update SpecView after its update plan has expired.
A =	Start a new 2-year update plan. <b>Note:</b> Valid one time only when upgrading from version 2.5 to version 3.

Your Authorized Supplier is:



Batavia, IL - Rockford, IL - Waukesha, WI - Appleton, WI

Phone: 800-323-5712 | Fax: 630-406-0595

[www.ashequipment.com](http://www.ashequipment.com) | [sales@ashequipment.com](mailto:sales@ashequipment.com)



## SpecView SCADA Software

### How to Choose the Correct SpecView Options

Order this option...	If you want to...
<b>Mini Version</b>	Operate a system with data from one or two simple instruments. This option includes historical replay and allows up to two instruments. Note that in some cases, devices such as profiling and multi-loop controllers are represented by more than one instrument, the mini version may not be appropriate.
<b>Standard Version</b>	Be free to expand configurations beyond the two instrument limit of the mini version.
<b>Single Port</b>	Communicate with instruments on only one serial communications port or only via Ethernet only.
<b>Multiple Port</b>	Communicate with instruments on more than one serial communications port and via Ethernet.
<b>Historical Replay</b>	Replay logged data on screens in trends, bar graphs and numeric fields. Without the option, replay is limited to the last four hours of data.
<b>Strategy Controller</b>	Configure SpecView to respond automatically to events such as specific parameter values with actions such as printing the screen, starting logging or download a recipe. Events can also be time or calendar based. Without the strategy controller option there is a two event limit.
<b>DDE</b>	Integrate SpecView with other Windows® programs.
<b>OPC Client</b>	Connect SpecView to instruments via a third-party OPC server.
<b>ActiveX Container</b>	Integrate third-party or customer-written ActiveX controls into SpecView.
<b>Remote Users</b>	Monitor instruments from multiple computers simultaneously. Order the number of remote users corresponding to the maximum number of additional computers needed to connect simultaneously.
<b>SERIES F4 Programmer Driver</b>	Use the computer to manage profiles: program profiles in the computer, save profiles on the computer, or download profiles that are saved on the computer to the SERIES F4.
<b>Allen-Bradley® DF1 Driver</b>	Connect to Allen-Bradley® PLCs (process logic controllers) that support the DF1 protocol
<b>Update Plan</b>	SpecView includes one year of free updates with an option for five additional years. The update period may be extended or restarted with field upgrade options.

*Your Authorized Supplier is:*



Batavia, IL - Rockford, IL - Waukesha, WI - Appleton, WI

Phone: 800-323-5712 | Fax: 630-406-0595

[www.ashequipment.com](http://www.ashequipment.com) | [sales@ashequipment.com](mailto:sales@ashequipment.com)



## EZ-warePLUS

The Silver Series EM programming software, EZwarePlus, is easy to use and features a large variety of built-in screen objects that make it powerful. When creating screens, the user can call upon extensive graphics libraries, import custom graphics and add numeric displays, entry fields, analog meters, bar graphs and trend graphs with just a few mouse clicks. Screen objects are highly customizable, and the user can create libraries of their own objects for repeat use. The online simulator, Ethernet and USB support, make testing and downloading fast.

The EZwarePlus software suite is available for download free of charge at [www.watlow.com](http://www.watlow.com) and on the Controller Support Tools DVD-ROM (part number 0601-0001-0000) included with the related Watlow controllers.

### Features and Benefits

#### Powerful, easy-to-use EZwarePlus programming software

- Requires only a small investment in time to create a useful interface
- Provides the ability to learn additional features as needed
- Provides advanced interface features such as animation and pop-up windows
- Reduces development time by providing extensive graphical libraries and facilitating reuse with user-created libraries

#### Offline and online simulation

- Speeds up development by making it faster and easier to test projects
- Allows faster creation of fine-tuned interfaces by speeding up iterations

#### Upload and download password protection

- Prevents users from altering projects
- Protects projects in OITs from accidental overwrite

#### Extensive graphical libraries and user-created libraries

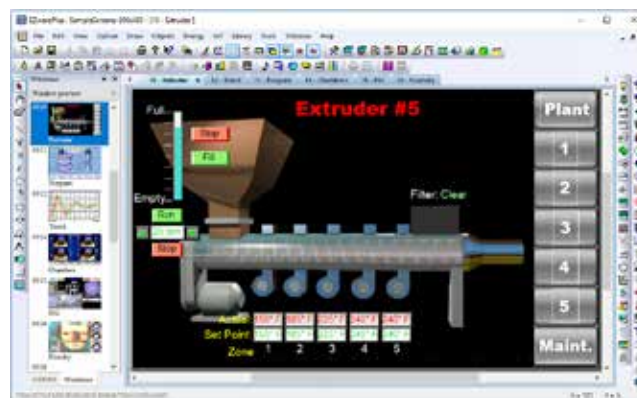
- Reduces development time and facilitates reuse
- Simplifies development by allowing import of common graphic formats: bitmaps, JPEGs and animated GIFs

#### Project manager

- Simplifies managing projects for multiple applications

#### Project compress/uncompress

- Archives all necessary files in one compressed file
- Allows a single file to be saved or delivered as the project source



#### User-programmable macros with math functions and support for floating point

- Extends functionality
- Automates processes

#### TrueType fonts with Unicode (international) characters and language switching feature

- Makes screen content easy to read by allowing formatting such as bold, italics, underline, scrolling and blinking
- Prevents errors by communicating with users in their native languages
- Reduces development and support by allowing inclusion of up to 24 user-selectable languages in a project

#### Tag library and address find and replace function

- Simplifies project reuse with similar but not identical controllers

#### Label library

- Speeds up screen development by eliminating the need to enter the same text multiple times
- Enables on-the-fly language changes for up to 24 languages per project

#### Library import and export functions

- Reduces errors and speeds up development by eliminating tedious data entry when multiple projects interface with the same devices

#### Layers, grid, alignment, nudge, space-even and make-same-size tools

- Speeds up creation of smart looking screens by automatically placing objects aligned on the screen
- Gives user precise control over object placement





## EZ-warePLUS

### Software Suite

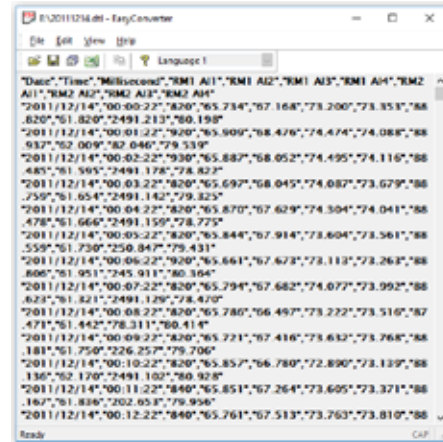
The EZwarePlus software suite includes EasyConverter, EZwarePlus screen editor, Utility Manager and Recipe Editor programs.



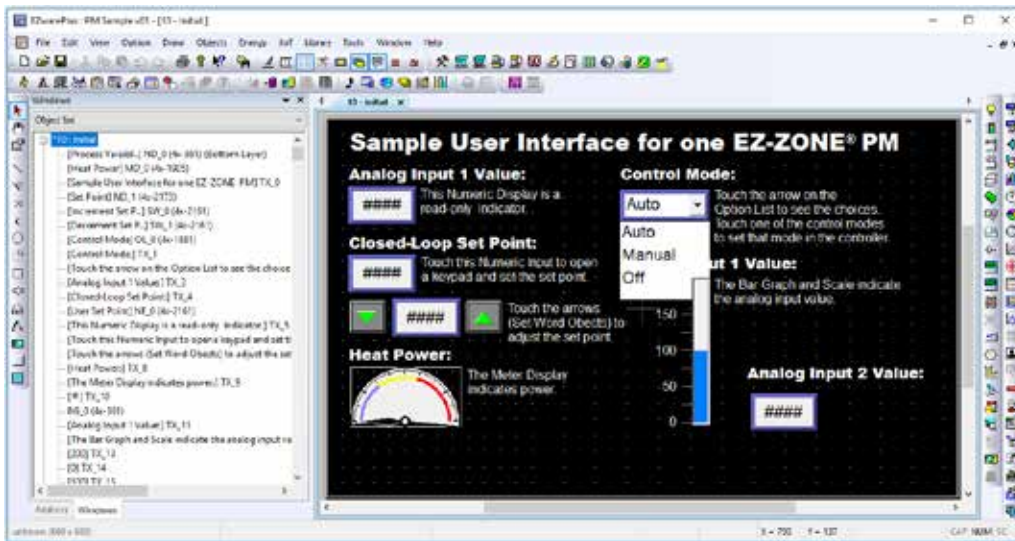
Utility Manager uploads and downloads projects to and from the Silver Series EM, opens compiled projects in simulation and launches the other EZwarePlus programs.

ID	ADDRESS	Recipe Name	Set Point 1	High Process Alarm 1	Set Point 2	High Process Alarm 2	Control
0	0	Standard Process	400.0	500	400	500	520
1	28	Special for Customer	235	250	215	250	
2	30	Military Specificati	425.0	450	375	425	
3	57	PDA Test	140.0	175	150.7	180	
4	76	CE Test	50	65	75	100	
5	95		0	0	0	0	

The Recipe Editor configures memory files for use with Silver Series EM OITs and allows offline creation of recipes.



EasyConverter converts log files saved by the Silver Series EM OIT to file formats used by popular Windows® software such as Microsoft® Excel®.



EZwarePlus provides a graphical screen designing environment with point-and-click access to features and drag-and-drop ease.

### Compatibility

EZwarePlus software can be used to configure Silver Series EM operator interface terminals as interfaces for Watlow EZ-ZONE controllers and other automation devices.

**Note:** EZware-5000 is still available for programming older Silver Series OITs.

### System Requirements

#### Operating System

- Windows® 10, 8.1 or 7