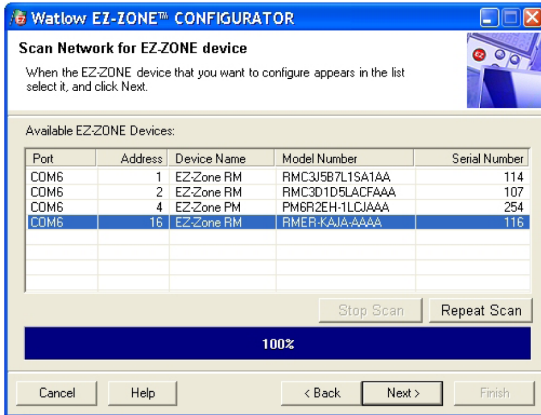
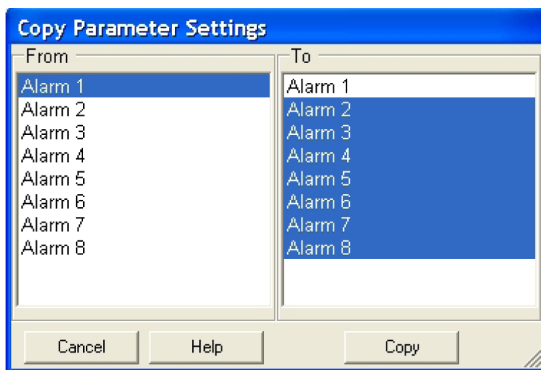


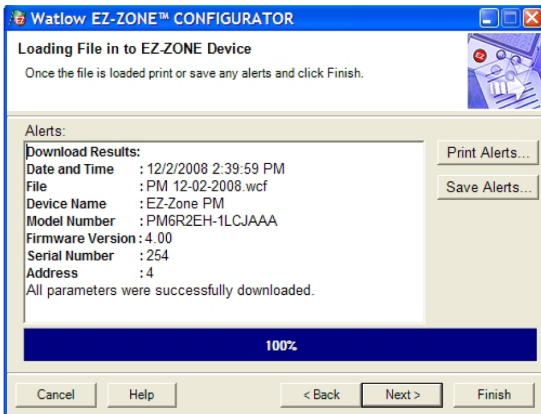
Illustrated Features



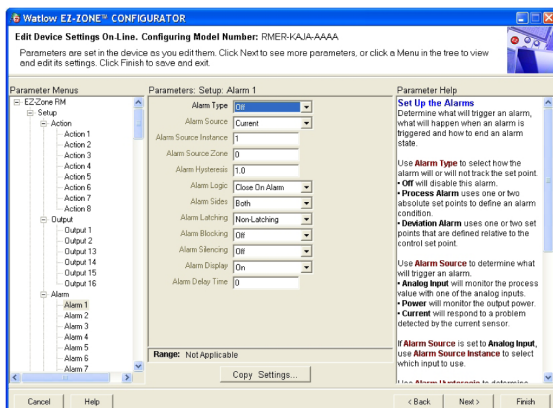
Detects EZ-ZONE devices connected to the computer's communications ports.



Copy feature speeds up configuration.



Confirms that parameter downloads were successful and reports exceptions.



Menu explorer allows users to skip directly to desired parameter or browse each setting.

Compatibility

EZ-ZONE Configurator is compatible with all versions of EZ-ZONE products, but can be used to download configuration files only to products meeting the requirements listed below.

Product	Minimum Firmware Version
EZ-ZONE RUI	3.0
EZ-ZONE ST	4.0*
EZ-ZONE PM	7.0
EZ-ZONE PM Express	1.0
EZ-ZONE RM Control Module	1.0
EZ-ZONE RM Expansion Module	1.0
EZ-ZONE RM Access Module	1.0
EZ-ZONE RM High-Density Control Module	5.0
EZ-ZONE RM High-Density Limit Module	5.0
EZ-ZONE RM High-Density Scanner Module	5.0

* Configuration files may be downloaded to EZ-ZONE ST controllers originally purchased with revision 4.0 or later only.

System Requirements

Minimum Requirements

- 485 Communications Port: USB port and USB-to-485 converter, or serial COM port (232) and 232-to-485 converter
- Microprocessor: Pentium® IV or equivalent
- Memory: 128 MB RAM (256 MB recommended)
- Disk Space: 140 MB (100 MB if Microsoft.NET Framework is already installed.)
- Video: 800 x 600 (1024 x 768 or higher recommended)

Operating System Recommended

- Windows® 10
- Windows® 8.1
- Windows® 7

Watlow® and EZ-ZONE® are registered trademarks of Watlow Electric Manufacturing Company.

Microsoft® and Windows® are registered trademarks of Microsoft Corporation.

Pentium® is a registered trademark of Intel Corporation.